



FUNDING NETWORK MEETING 2025

24 September, Brussels, Belgium

AGENDA & PRACTICAL INFO

Eurodiaconia  *Connecting faith
and social justice
through action*

INVITATION | 2025 FUNDING NETWORK MEETING



Dear members,

Warmest greetings!

We are delighted to invite you to Eurodiaconia's 2025 Funding Network Meeting.

This year is a crucial year for funding social services in Europe. The European Commission will release its proposal for the next EU long-term budget (Multiannual Financial Framework or MFF), part of which are programmes that are important for diaconia (both at the European and national levels in the case of shared management funds). We are also at a time of great political shifts and uncertainty, with substantial challenges in public funding for social services and inclusion.

This network meeting will bring together members interested in funding, projects, and grants for social inclusion to explore collaboration and to exchange good practices in successful grant applications and lessons learnt in applying for funding in the field of education, training, youth, sport, culture and volunteering. We will also learn about EU work programmes and funding opportunities in these fields. Finally, we will preliminarily discuss the implications of the next MFF on funding for social inclusion projects and services.

The funding network meeting is being organised back-to-back with the joint Eurodiaconia-Caritas Europa event Shaping the future of social and health care services in Europe within the context of the next EU long-term budget at the European Parliament on 23 September. We hope that you will attend this event as well.

Thank you very much and we hope to see you in Brussels.

Best regards,

Glenis



INVITATION | 2025 FUNDING NETWORK MEETING



Financial information

Eurodiaconia members from Central and Eastern Europe and from minority churches are eligible to apply for financial support via the registration form (ex-post compensation; read carefully the [financial aid guidelines](#)). If you would like to request financial support, we kindly ask you to let us know by registering as soon as possible, but no later than the 4th of September. Our general rule is that a maximum of 2 participants per organisation can attend the network meeting, and due to financial restrictions, only 1 of them can be financially supported if eligible. If you have a particular situation, please contact the Secretariat.


Full sponsorship will only be granted if you attend the entire meeting (full day of the 24th). The Secretariat reserves the right to only reimburse your stay partially, should you not follow the whole programme. In case of conflicting travel schedules and emergencies, please contact the Secretariat.

Venue

The venue of the meeting will be at: Rue Joseph II 166, 1000 Brussels.

Travel

Participants are asked to book their own travel tickets, following confirmation of their participation. Those who are requesting financial support are kindly asked to communicate to the Secretariat the cost of the flight tickets. If it exceeds 350 euros, please hold off from the purchase until you receive confirmation from the Secretariat.



INVITATION | 2025 FUNDING NETWORK MEETING



Accommodation

Eurodiaconia will book and pay for the accommodation of participants who ask for and are granted financial support in a hotel close to the venue. Please do not book your own accommodation if you request financial support.

Other (non-sponsored) participants are asked to book and pay for their own accommodation. If you wish to stay at the same hotel where the sponsored participants are staying, please get in touch with us.


Inclusive and respectful network meetings

We are committed to fostering an inclusive and respectful space for dialogue. We recognise that diversity strengthens our work, and we encourage open discussions where diverse perspectives are shared with respect and mutual understanding. We expect all participants to contribute to an environment where everyone feels safe, valued and respected.

By participating in our Network Meeting, you agree to comply with [Eurodiaconia's Code of Conduct](#) during this event.

Contact Information

If you have questions about the content and the programme, please contact Glenis at glenis.balanguie-dalkiran@eurodiaconia.org and if you have questions about logistics and financial support, please get in touch with Konstantina (Nantia) at konstantina.kinikli@eurodiaconia.org.



AGENDA | WEDNESDAY, 24 SEPTEMBER 2025



24 September 2025



Conference Room (Level 0), Rue Joseph II 166, 1000 Brussels

MORNING SESSION

08:45 – 9:15	Registration, morning coffee
09:15 – 09:20	Devotion <ul style="list-style-type: none">• <i>Sladjana Jovanović, Ecumenical Humanitarian Organisation</i>
09:20 – 09:30	Introduction, acknowledgement of participants, agenda, practical information <ul style="list-style-type: none">• <i>Glenis Balangue-Dalkiran (Membership and capacity-building officer), Eurodiaconia</i>
09:30 – 10:20	Session 1 - Lessons learnt and good practice: Erasmus+ and European Solidarity Corps. <ul style="list-style-type: none">• <i>Inese Bulava (Project Manager), Diaconia Centre of the Evangelical Lutheran Church of Latvia</i>• <i>Elina Huurre (Project Expert) and Piritä Pietilä-Litendahl (Service Supervisor), Oulu Deaconess Institute Foundation (ODL)</i>• <i>Q&A and discussion</i>
10:20-10:35	Coffee and comfort break
10:35 – 11:20	Session 2 - Lessons learnt and good practices: Citizens, Equality, Rights and Value (CERV) <ul style="list-style-type: none">• <i>Anca Enache (Development Manager), Helsinki Deaconess Foundation</i>• <i>Mihai Oancea (Operational and Project Officer), ERGO Network</i>• <i>Q&A and discussion</i>
11:20 – 12:20	Breakout groups: Presenting project ideas and exploring collaboration <i>Facilitators: Glenis Balangue-Dalkiran and Louise McKeown, Eurodiaconia</i>
12:20 – 12:30	Plenary Reporting <i>Group-assigned rapporteurs</i>
12:30 – 13:30	Lunch Break

AGENDA | WEDNESDAY, 24 SEPTEMBER 2025

AFTERNOON SESSION	
13:30 – 13:40	Introduction to the afternoon sessions and ice breaker <ul style="list-style-type: none">• Louise McKeown, Policy Assistant, Eurodiaconia Introduction of the speakers <ul style="list-style-type: none">• Glenis Balangue-Dalkiran, Eurodiaconia
13:40 - 14:25	Presentations from the European Education and Culture Executive Agency <ul style="list-style-type: none">• Srd Kisevic, Deputy Head of Unit, Citizens and EU Values Programme• Jana Fiorito, Programme Coordination, Erasmus+ and European Solidarity Corps• Q&A and discussion
14:25 - 14:35	Comfort Break
14:35 – 15:05	Session 4 - On the MFF 2028-2034 proposal and its implications on diaconia <ul style="list-style-type: none">• Glenis Balangue-Dalkiran, Eurodiaconia
15:05 - 15:15	Synthesis and ways forward <ul style="list-style-type: none">• Raquel Correia, Associação Beneficente de Ajuda (Eunoia)
15:15 - 16:00	Closing and networking opportunity

Contact persons: Glenis Balangue-Dalkiran (glenis.balangue-dalkiran@eurodiaconia.org) and Konstantina Kinikli (konstantina.kinikli@eurodiaconia.org)

HOTEL AND ACCOMMODATION



Motel One and Euroflat Hotel

Most of our participants are staying at **Motel One Brussels** (Rue Royale 120, 1000 Brussels, Belgium) and at the **First Euroflat Hotel** (Bd Charlemagne 50, 1000 Brussels, Belgium)

Motel One Brussels is centrally located in Brussels, a 10-minute walk from the Grand Place, Manneken Pis, the shopping area around Rue Neuve and Brussels Central Station

The check-in is from **15:00** and the check-out until **12:00**.

First Euroflat Hotel is located in the European Commission district and only at 100m from the Schuman station (metro, bus, trains, and airport shuttles)

The check-in time is from **15:00** and the check-out is until **11:00**.

Arriving by plane

How to reach the hotels from the Zaventem airport

Motel One

It takes around 30 minutes to reach the motel from **Zaventem Brussels Airport**, depending on the transport you decide to take. We recommend taking the train with destination **Brussel-Zuid/Bruxelles Midi**.

First Euroflat Hotel

It takes around 20 minutes to reach the hotel from **Zaventem Brussels Airport**, depending on the transport you decide to take. We recommend taking the train with destination to **Dinant** and disembark at **Station Brussel-Schuman**. Then it is a 3 minutes walk to the hotel.

How to reach the hotels from the Charleroi airport

The **Brussels South Charleroi Airport** is located around 60 km away from Motel One. At the airport, there are **FLIBCO** buses services to get to the centre of Brussels.

Flibco bus

The buses go every 20 minutes and the ride takes approximately **1 hour and 20 minutes**. It is possible to buy tickets on their website for the price of **19.95 euros**.

Click [here](#) to reach the Flibco website.

The Flibco bus will leave you at Brussels South Train Station. To reach Motel One, you can take the train to **Landen**, disembark at **Central Station Brussels** and have a **7-10 minute walk** to reach the mhotel. For those staying at **Euroflat hotel** you can take the train with destination to **Louvain-La-Neuve** and disembark at **Station Brussel-Schuman**. Then it is a 3 minutes walk to arrive

Click [here](#) to buy your tickets for the train online.





Arriving by train

How to reach the hotel from the Brussels South Train Station

MotelOne is **13 minutes away by train** from Brussels South Train Station, which offers international Thalys and Eurostar connections. You can take the train to **Landen**, stop at **Central Station Brussels** and take a **7-10 minute walk** to reach Motel One Brussels.

Euroflat is **22 minutes away by train** from Brussels South Train Station. You can take the train to **Luxembourg**, disembark at **Station Brussel-Schuman** and have a 3 minutes walk to reach the hotel.

Click [here](#) to buy your tickets for the train online.



VENUE



Rue Joseph II 166, 100 Brussels, Belgium

The Funding Network Meeting will be held at the Conference Room of the Evangelical Church in Germany (EKD) Brussels office, where Eurodiaconia's office is also located. We are very happy to have you all there.

How to reach the venue from Motel One and Euroflat Hotel

Motel One

By bus (17 minutes)

You can take bus **number 63** with direction to Cimetière de Bruxelles and stop at Ambiorix station. It is then a 5-minute walk to reach the Eurodiaconia venue.

By metro (12 minutes)

You can take metro number 5 with direction to **Herrmann Debroux/Stockel** and stop at **Schuman station**. It is then a 2-minute walk to reach the Eurodiaconia venue.

Euroflat Hotel

3 minutes walk away

MEALS

Eurodiaconia will provide morning coffee/tea and lunch during the funding network meeting at the venue.

MOVING AROUND THE CITY

Public transport

Although Motel One and Euroflat Hotel are located in the very centre of Brussels, you might need some public transport services to access parts of the city you want to visit.

Where to buy your ticket? You can purchase your ticket in the public transport or at major stops with contactless payment. You can pay for your trip using your contactless bank card (debit or credit), smartphone or smartwatch.

Every STIB bus, tram and metro station is equipped with a specific contactless payment device which supports any bank card with the contactless logo.

Click [here](#) to learn more about prices and packages.



CARITAS EUROPA AND EURODIACONIA'S CO-ORGANISED EVENT



European Parliament

Participants that have registered for the Caritas Europa and Eurodiaconia's co-organised event will have all information sent from Caritas regarding their entrance. *Each participant will have a different address to enter the parliament according to their situation.*

How to reach the EP from Motel One and Euroflat hotel

Motel One

By bus (19 minutes)

You can take bus **number 38** from station **Grand-Central** with direction to Heros and stop at **Luxembourg station**. It is then a 5-minute walk to reach the Eurodiaconia venue. You will get the exact address regarding your situation from Caritas Europa.

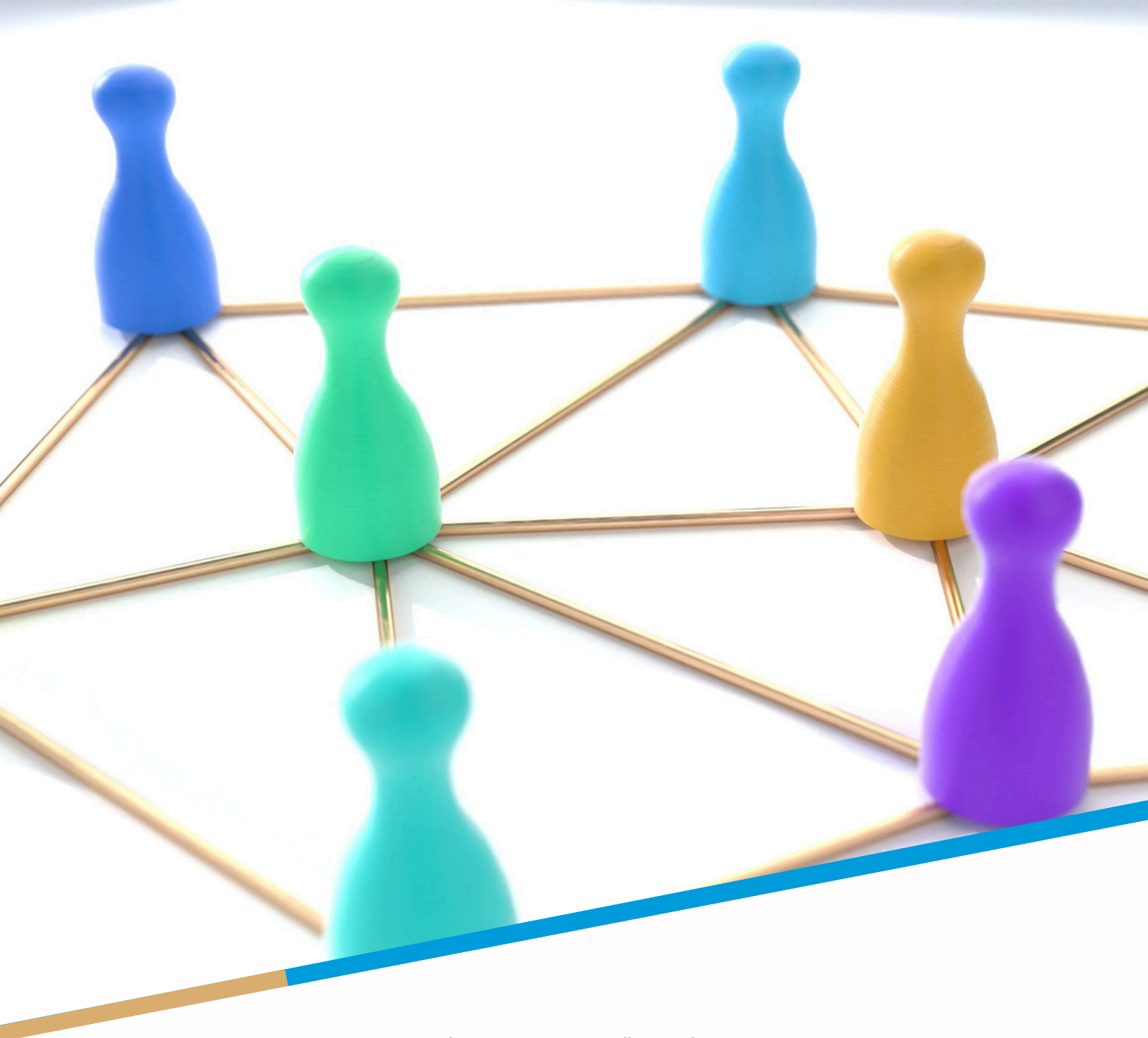
Euroflat Hotel

By bus (11 minutes)

You can take metro **number 64** station **Marie-Louise** with direction to **Porte de Namur** and stop at **Luxembourg station**. It is then a 2-minute walk to reach the Eurodiaconia venue.

MEALS

Eurodiaconia and Caritas Europa will provide coffee and tea during the event.



Rue Joseph II 166 – 1000 Bruxelles – Belgium

Tel.: +32 (0)2 234 38 60 Email: office@eurodiaconia.org

Fax: +32 (0)2 234 38 65 Web: www.eurodiaconia.org



Eurodiaconia  Connecting faith
and social justice
through action



Funded by the European Commission under the ESF+ programme 2022 – 2025
The information contained in this document does not necessarily reflect the position or opinion of the
European Commission. Copyright 2024 Eurodiaconia All rights reserved.